

# Specifications

**SSR-IAC-05A**



# Specifications

Typical for 25 °C unless otherwise specified.

## General characteristics

Table 1. General characteristics

| Parameter         | Conditions | Specification         |
|-------------------|------------|-----------------------|
| Type              |            | High voltage AC input |
| Isolation voltage |            | 4000 Vrms             |

## Input

Table 2. Input specifications

| Parameter                     | Conditions              | Specification        |
|-------------------------------|-------------------------|----------------------|
| Nominal input voltage         |                         | 240 VAC              |
| Input voltage range           |                         | 180 to 280 VAC / VDC |
| Input current                 | Input voltage = maximum | 6 mA RMS             |
| Nominal input resistance (R1) |                         | 60 kOhms             |
| Maximum pick-up voltage       | (Output low)            | 180 VAC              |
| Minimum drop-out voltage      | (Output high)           | 50 VAC               |

## Output

Table 3. Output and logic circuit specifications

| Parameter                        | Conditions              | Specification |
|----------------------------------|-------------------------|---------------|
| Nominal logic voltage            | Vcc                     | 5 VDC         |
| Logic voltage range              | Vcc                     | 3 to 6 VDC    |
| Maximum logic supply current     | Logic voltage = nominal | 10 mA         |
| Output current range             |                         | 1 to 50 mA    |
| Minimum output breakdown voltage |                         | 50 VDC        |
| Maximum turn-on time             |                         | 20 mS         |
| Maximum turn-off time            |                         | 20 mS         |

## Environmental

Table 4. Environmental specifications

|                             |               |
|-----------------------------|---------------|
| Operating temperature range | -40 to 100 °C |
| Storage temperature range   | -40 to 125 °C |
| Mechanical shock            | MIL-STD-202   |
| Vibration                   | MIL-STD-202   |

## Mechanical

Table 5. Mechanical specifications

|            |   |
|------------|---|
| Dimensions | 1.7" (43.2 mm) L x 0.6" (15.2 mm) W x 1.25" (31.8 mm) H |
|------------|---|



PLCs



Adquisición



Instrumentos



Registradores



Potencia



HMIs



Switches



Movimiento



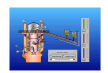
Sensores



Convertidores



Teclados



SCADA



Telemetría

### Block diagram and pin out

