



DATA ACQUISITION CATALOG

**Data Acquisition • Sound and Vibration
Temperature Measurement • Data Loggers • OEM and Embedded**



OUR PRODUCT LINES



High-quality Data Acquisition, and Data Loggers that are easy-to-use, easy-to-integrate and easy-to-support.



Advanced DAQ devices specializing in dynamic signal analyzers and isolated data acquisition.

Data Acquisition

2

Measurement Computing provides data acquisition solutions for a wide range of applications and interfaces. MCC offers high-quality hardware, software, and drivers for a quick and customizable solution to your unique application.

16-BIT MULTIFUNCTION

From \$289

USB-230 Series



Analog Inputs	8 SE/4 DIFF
Resolution	16-bit
Sample Rate	Up to 100 kS/s
Simultaneous	—
Isolated	—
Analog Outputs	2
Digital I/O	8
Counters	1 x 32-bit



- Software support for Windows

HIGH-PRECISION

From \$769

USB-1808 Series



Analog Inputs	8 SE/8 DIFF
Resolution	18-bit
Sample Rate	Up to 200 kS/s/ch
Simultaneous	✓
Isolated	—
Analog Outputs	2
Digital I/O	4
Counters	2 x 32-bit†



- Software support for Windows and Linux
- † 2 quadrature encoder inputs

ETHERNET MULTIFUNCTION

Only \$579

E-1608



Analog Inputs	8 SE/4 DIFF
Resolution	16-bit
Sample Rate	250 kS/s
Simultaneous	—
Isolated	—
Analog Outputs	2
Digital I/O	8
Counters	1 x 32-bit



- Software support for Windows and Linux

HIGH-SPEED SIMULTANEOUS

From \$2,319

USB-1602HS/USB-1604HS Series



Analog Inputs	Up to 4 SE
Resolution	16-bit
Sample Rate	Up to 2 MS/s
Simultaneous	✓
Isolated	✓
Analog Outputs	Up to 2
Digital I/O	32
Counters	4



- Software support for Windows

HIGH-SPEED MULTIFUNCTION

From \$459

USB-1608G Series



Analog Inputs	16 SE/8 DIFF
Resolution	16-bit
Sample Rate	Up to 500 kS/s
Simultaneous	—
Isolated	—
Analog Outputs	Up to 2
Digital I/O	8
Counters	2 x 32-bit



- Software support for Windows and Linux

ISOLATED SIMULTANEOUS

From \$2,159

DT8824/DT9824 (Ethernet, USB)



Analog Inputs	4 DIFF†
Resolution	24-bit
Sample Rate	4800 S/s/ch
Simultaneous	✓
Isolated	✓
Analog Outputs	—
Digital I/O	Up to 16
Counters	—



- Software support for Windows
- † ±500 V Isolated channel-to-channel

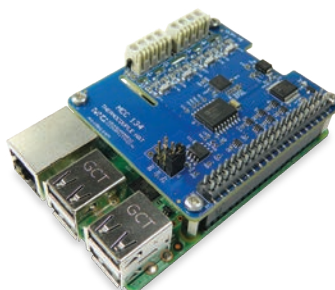
LOW-COST AND EDGE MEASUREMENTS

From \$99

DAQ HAT Series for Raspberry Pi®



Raspberry Pi is the most popular single-board computer in use today. Many traditional DAQ users are designing systems around it because of its flexibility and low cost. This growing base of Raspberry Pi users, along with open-source software becoming more industry accepted, is driving growth and making single-board computer use more prevalent in professional DAQ applications.



MCC 118	Analog Inputs	Sample Rate	Resolution
	8 SE Voltage	100 kS/s	12-bit
MCC 128	8 SE/4 DIFF Voltage	100 kS/s	16-bit
MCC 134	Analog Inputs	Update Interval	Resolution
	4 Thermocouple	1 Sec	24-bit
MCC 152	Analog Outputs	Digital I/O	Resolution
	2 Voltage	8	12-bit
MCC 172	Analog Inputs	Sample Rate	Resolution
	2 IEPE	51.2 kS/s/ch	24-bit

Data Acquisition

Measurement Computing provides data acquisition solutions for a wide range of applications and interfaces. MCC offers high-quality hardware, software, and drivers for a quick and customizable solution to your unique application.

DEVICE	Bus Type	Analog Inputs	Sample Rate	Resolution	Digital I/O	Counters	Analog Outputs	PRICE
LOW COST								
USB-200 Series	USB	8 SE	500 kS/s	12-bit	8	1	Up to 2	From \$105
USB-230 Series	USB	8 SE/4 DIFF	100 kS/s	16-bit	8	1	2	From \$289
MCC 118	RPI	8 SE	100 kS/s	12-bit	—	—	—	\$99
MCC 128	RPI	8 SE/4 DIFF	100 kS/s	16-bit	—	—	—	\$199
BTH-1208LS	Bluetooth	8 SE/4 DIFF	1 kS/s	12-bit	8	1	2	\$209
USB-1208LS	USB	8 SE/4 DIFF	1.2 kS/s	12-bit	16	1	2	\$140
USB-1208FS-Plus	USB	8 SE/4 DIFF	50 kS/s	12-bit	16	1	2	\$199
E-1608	Ethernet	8 SE/4 DIFF	250 kS/s	16-bit	8	1	2	\$579
USB-1608G Series	USB	16 SE/8 DIFF	500 kS/s	16-bit	8	2	Up to 2	From \$459
SIMULTANEOUS								
USB-1808	USB	8 SE/8 DIFF	50 kS/s/ch	18-bit	4	2*	2	\$769
USB-1808X	USB	8 SE/8 DIFF	200 kS/s/ch	18-bit	4	2*	2	\$989
USB-1608FS-Plus	USB	8 SE	100 kS/s/ch	16-bit	8	1	—	\$459
DT9816 Series	USB	6 SE	Up to 750 kS/s/ch	16-bit	16	1	—	From \$589
DT9832	USB	2 or 4 SE	2 MS/s/ch	16-bit	32	5*	Up to 2	\$3,895
DT9836 BNC Series	USB	6 or 12 SE	225 kS/s/ch	16-bit	32	5*	Up to 4	From \$2,789
DT9826	USB	16 SE	41.6 kS/s/ch	24-bit	16	2	—	\$3,179
HIGH SPEED								
USB-1208HS	USB	8 SE/4 DIFF	1 MS/s	13-bit	16	2	—	\$579
USB-2600 Series	USB	16 or 64 SE	1 MS/s	16-bit	24	4	Up to 4	From \$919
USB-1616HS Series	USB	16 SE/8 DIFF	1 MS/s	16-bit	24	4	Up to 4	From \$1,619
DT9834-16-4-16-BNC	USB	16 SE/8 DIFF	500 kS/s	16-bit	32	5	4	\$3,999
DT9862 Series	USB	2 SE	10 MS/s/ch	16-bit	32	5*	Up to 2	From \$4,049
USB-2020	USB	2 SE	20 MS/s/ch	12-bit	8	—	—	\$1,159
HIGH PRECISION								
USB-2404 Series	USB	4 DIFF	Up to 50 kS/s/ch	24-bit	—	—	—	From \$1,159
DT8824	Ethernet	4 DIFF	4.8 kS/s/ch	24-bit	4	—	—	\$2,969
DT9824	USB	4 DIFF	4.8 kS/s/ch	24-bit	16	—	—	\$2,159
DT9844	USB	32 SE/16 DIFF	1 MS/s	20-bit	32	5	—	\$3,485
DIGITAL I/O								
USB-1024LS	USB	—	—	—	24	1	—	\$95
USB-DIO32HS	USB	—	—	—	32**	—	—	\$579
USB-DIO96H Series	USB	—	—	—	96	1	—	From \$379
E-DIO24	Ethernet	—	—	—	24	1	—	\$335
DT9810	USB	8 SE	25 kS/s	10-bit	20	1	—	\$359
COUNTER/TIMER								
USB-CTR Series	USB	—	—	—	8**	4 or 8**	—	From \$419
ANALOG OUTPUT								
MCC 152	RPI	—	—	12-bit	8	—	2	\$99
USB-3100 Series	USB	—	—	16-bit	8	1	Up to 16	From \$345
USB-3101FS	USB	—	—	16-bit	—	—	4	\$579
MIXED/UNIVERSAL INPUT***								
WebDAQ 904	Logger	4 DIFF	100 S/s/ch	24-bit	4	—	—	\$1,569
USB-2404-UI	USB	4 DIFF	100 S/s/ch	24-bit	—	—	—	\$1,159
SC-1608-USB	USB	8 DIFF	250 kS/s	16-bit	8	2	—	\$1,105
SC-1608X-2AO-USB	USB	8 DIFF	500 kS/s	16-bit	8	2	2	\$1,325
SC-1608-2AO-ENET	Ethernet	8 DIFF	250 kS/s	16-bit	8	1	2	\$1,215
DT9829-8	USB	8 DIFF	960 S/s	24-bit	4	—	—	\$2,159

* Capable of measuring quadrature encoders

** High-speed scanning up to 8 MS/s

*** Most devices capable of measuring strain, pressure, temperature, current, resistance, and voltage.

Sound and Vibration

4

Directly measure IEPE-type accelerometers or voltage inputs with no added signal conditioning using USB, Ethernet, and Raspberry Pi® data acquisition (DAQ) devices.

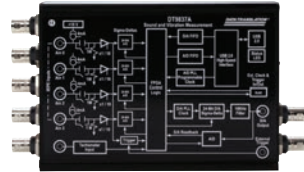
PORTABLE USB

From \$1,909

DT9837 Series

DT

Analog Inputs	4 SE†
Resolution	24-bit
Sample Rate	Up to 105.4 kS/s/ch
Simultaneous	✓
Isolated	—
Analog Outputs	Up to 1
Digital I/O	—
Tachometer	Up to 1



† Direct IEPE inputs, sync port for channel expansion

INTELLIGENT DATA LOGGER

Only \$1,569

WebDAQ 504

MCC

Analog Inputs	4†
Resolution	24-bit
Sample Rate	51 kS/s/ch
Simultaneous	✓
Isolated	—
Analog Outputs	—
Digital I/O	4
Tachometer	—



† Direct IEPE inputs

MEDIUM-CHANNEL COUNT USB

From \$4,369

DT9857E Series

DT

Analog Inputs	8 or 16 SE†
Resolution	24-bit
Sample Rate	105.4 kS/s/ch
Simultaneous	✓
Isolated	—
Analog Outputs	2
Digital I/O	16
Tachometer	1



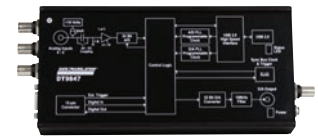
WIDE BANDWIDTH USB

From \$2,659

DT9847 Series

DT

Analog Inputs	Up to 3 SE†
Resolution	24-bit
Sample Rate	216 kS/s/ch
Simultaneous	✓
Isolated	—
Analog Outputs	Up to 2
Digital I/O	8
Tachometer	—



† Direct IEPE inputs, sync port for channel expansion

4-CHANNEL ETHERNET

Only \$4,185

DT8837

DT

Analog Inputs	4 IEPE
Resolution	24-bit
Sample Rate	52.7 kS/s/ch
Simultaneous	✓
Analog Outputs	1
Digital I/O	4
Tachometer	1



HIGH-CHANNEL COUNT USB

From \$17,319

VIBbox

DT

Analog Inputs	Up to 64†
Resolution	24-bit
Sample Rate	105.4 kS/s/ch
Simultaneous	✓
Isolated	—
Analog Outputs	Up to 8
Digital I/O	Up to 64
Tachometer	Up to 4



† Direct IEPE inputs, sync port for channel expansion

LOW-COST, INTELLIGENT CONDITION MONITORING

Only \$399

MCC 172

MCC

Analog Inputs	2†
Resolution	24-bit
Sample Rate	51.2 kS/s/ch
Simultaneous	✓
Analog Outputs	—
Digital I/O	1
Tachometer	—



† Direct IEPE inputs

The MCC 172 is a two-channel, high-speed DAQ HAT for making sound and vibration measurements from IEPE sensors like accelerometers and microphones and is ideal for Machine Condition Monitoring and Edge Computing applications. It features two high-speed channels and 24-bit resolution for making quality measurements. Up to eight MCC HATs can be stacked onto one Raspberry Pi. MCC offers a variety of DAQ HATs that allow users to configure multifunction, Pi-based solutions with analog input, output, and digital I/O.

Temperature Measurement

Measurement Computing offers a wide selection of temperature measurement DAQ products. Low-cost solutions such as the USB-TEMP offer thermocouple, RTD and thermistor inputs in one module.

LOW-COST USB

From \$419

USB-TEMP and TC Series



Channels	8
Thermocouples	✓
RTD	✓
Voltage Inputs	—
Sample Rate	2 S/s/ch
Isolated	—
Analog Outputs	—
Digital I/O	8



• Software support for Windows and Linux

INTELLIGENT DATA LOGGER

Only \$1,259

WebDAQ 316



Channels	16
Thermocouples	✓
RTD	—
Voltage Inputs	—
Sample Rate	75 S/s/ch
Isolated	—
Analog Outputs	—
Digital I/O	4



HIGH-CHANNEL COUNT

Only \$2,319

TC-32 (Ethernet, USB)



Channels	Up to 64
Thermocouples	✓
RTD	—
Voltage Inputs	—
Sample Rate	3 S/s/ch
Isolated	✓
Analog Outputs	—
Digital I/O	Up to 80



• Software support for Windows and Linux

RASPBERRY Pi

Only \$149

MCC 134



Channels	4
Thermocouples	✓
RTD	—
Voltage Inputs	—
Sample Rate	1 S/s
Isolated	—
Analog Outputs	—
Digital I/O	—



DEVICE	Channels	Thermocouple Inputs	RTD, Thermistor, Semiconductor, Temperature Inputs	Voltage Inputs	Sample Rate	PRICE
USB						
USB-TC	8	✓	—	—	2 S/s/ch	\$419
USB-TEMP	8	✓	✓	—	2 S/s/ch	\$629
USB-2408	8	✓	—	✓	1 kS/s	\$689
USB-2416	16*	✓	—	✓	1 kS/s	\$1,275
USB-2404-UI	4	✓	✓	✓	100 S/s/ch	\$1,159
DT9874 MEASURpoint	8 to 48	✓	RTD	✓	10 S/s/ch	From \$4,479
DT9829-8	8	✓	✓	✓	960 S/s	\$2,159
RASPBERRY PI						
MCC 134	4	✓	—	—	1 S/s	\$149
ETHERNET						
E-TC	8	✓	—	—	4 S/s/ch	\$559
TC-32	32**	✓	—	—	3 S/s/ch	\$2,319
DT8874 MEASURpoint	8 to 48	✓	RTD	✓	10 S/s/ch	From \$4,479
LOGGERS						
USB-501	1††	—	—	—	10 sec to 12 hrs	\$63
USB-502	2†	—	—	—	10 sec to 12 hrs	\$82
USB-601	1††	—	—	—	10 sec to 2 hrs	\$135
USB-603	2	✓	—	—	2 sec to 2 hrs	\$185
USB-5104	4	✓	—	—	1 sec to 18 hrs	\$330
USB-5106	4	—	Temperature, Current, Voltage	✓	1 sec to 18 hrs	\$149
WebDAQ 316	16	✓	—	—	75 S/s/ch	\$1,259
WebDAQ 904	4***	✓	RTD, Thermistor	✓	100 S/s/ch	\$1,569

* Expandable to 32 SE/16 DIFF

** Expandable to 64

*** Measures voltage (up to ±60 V), thermocouples, RTD's, current, resistance, and strain gages


† Measures temperature and humidity

†† Measure temperature directly


Data Loggers

Stand-alone devices for making remote measurements including: voltage, temperature, humidity, current, strain, and more.

LOW COST **From \$49**


USB-500 Series 

Channels	1 or 2
Measurement	Temperature, Humidity, Voltage, Current
Sample Rate	1 sec to 12 hrs
Digital I/O	—
Memory	Up to 32 K Readings
Features	Battery Powered




- Included software for USB-500/600 Series

MULTI-CHANNEL **From \$149**

USB-5100 Series 

Channels	4
Measurement	Thermocouple, Current, Voltage
Sample Rate	1 sec to 18 hrs
Digital I/O	—
Memory	Up to 1.9 Million Readings
Features	LCD Display



- Includes easy-to-use software

INTERNET ENABLED **From \$1,259**

WebDAQ Series 

WebDAQ 316	Analog Inputs	Sample Rate	Resolution
	16 Thermocouple	75 S/s/ch Max	24-bit
WebDAQ 504	Analog Inputs	Sample Rate	Resolution
	4 IEPE	51 kS/s/ch Max	24-bit
WebDAQ 904	Analog Inputs	Sample Rate	Resolution
	4 Universal	100 S/s/ch Max	24-bit



In an age of mobile applications and connected devices, the ability to access your data remotely is more important than ever. WebDAQ offers a new data logger architecture that allows configuration and access to the data from anywhere in the world.

DEVICE	Channels	Measurement Type	Sample Rate	Memory	Features	PRICE
LOW SPEED						
USB-501	1	Temperature	10 sec to 12 hrs	16 K Readings	Status LEDs	\$63
USB-501-LCD	1	Temperature	1 sec to 12 hrs	16 K Readings	LCD Display	\$81.50
USB-501-TC-LCD	1	Thermocouple	1 sec to 12 hrs	32 K Readings	LCD Display	\$102
USB-502	2	Temperature, Humidity	10 sec to 12 hrs	16 K Readings	Status LEDs	\$82
USB-502-LCD	2	Temperature, Humidity	10 sec to 12 hrs	16 K Readings	LCD Display	\$99
USB-503	1	0 up to 30 VDC	1 sec to 12 hrs	32 K Readings	—	\$80
USB-504	1	4 up to 20 mA	1 sec to 12 hrs	32 K Readings	—	\$80
USB-601	1	Temperature	10 sec to 2 hrs	250 K Readings	LCD Display	\$135
USB-603	2	Thermocouple	2 sec to 2 hrs	250 K Readings	LCD Display	\$185
USB-5104	4	Thermocouple	1 sec to 18 hrs	1.6 Million Readings	LCD Display	\$330
USB-5106	4	Temperature, Current, Voltage	1 sec to 18 hrs	1.9 Million Readings	LCD Display	\$149
HIGH SPEED						
LGR-5325	16	±10 V	Up to 100 kS/s	4 GB (Up to 32 GB)	4 Counters	\$1,735
LGR-5329	16	±30 V	Up to 200 kS/s	4 GB (Up to 32 GB)	4 Quadrature Inputs, Isolated Digital Inputs	\$2,540
WEB ENABLED						
WebDAQ 316	16	Thermocouple	75 S/s/ch	Unlimited	Web Server	\$1,259
WebDAQ 504	4	IEPE	51 kS/s/ch	Unlimited	Web Server	\$1,569
WebDAQ 904	4	Thermocouple, RTD, Voltage, Current, Resistance, Strain Gage	100 S/s/ch	Unlimited	Web Server	\$1,569
WIRELESS						
WiFi-501	1	Temperature	10 sec to 12 hrs	> 250 K Readings	LCD Display	\$150

OEM and Embedded Solutions

Board-only solutions with easy-to-integrate connectors. As a leading supplier of OEM DAQ solutions, MCC provides volume pricing and free technical support.

MULTIFUNCTION USB

Only \$105

USB-201-OEM



Analog Inputs	8 SE
Resolution	12-bit
Sample Rate	100 kS/s
Simultaneous	—
Analog Outputs	—
Digital I/O	8
Interface	USB



- Software support for Windows and Linux

RASPBERRY Pi

From \$99

MCC DAQ HATs



Analog Inputs	Up to 8
Input Type	Thermocouple, Voltage, or IEPE
Resolution	Up to 24-bit
Sample Rate	Up to 100 kS/s
Analog Outputs	Up to 2
Digital I/O	Up to 8
Interface	Raspberry Pi



- Open-Source Library for C/C++ and Python

HIGH SPEED

Only \$1,489

USB-2637



Analog Inputs	64 SE
Resolution	16-bit
Sample Rate	1 MS/s
Simultaneous	—
Analog Outputs	4
Digital I/O	24
Interface	USB



- Software support for Windows and Linux

MULTIFUNCTION ETHERNET

Only \$559

E-1608-OEM



Analog Inputs	8 SE/4 DIFF
Resolution	16-bit
Sample Rate	250 kS/s
Simultaneous	—
Analog Outputs	2
Digital I/O	8
Interface	Ethernet



- Software support for Windows and Linux

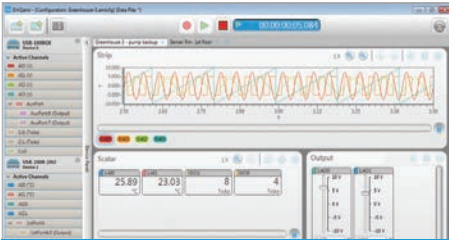
DEVICE	Bus Type	Analog Inputs	Sample Rate	Resolution	Digital I/O	Counters	Analog Outputs	PRICE
LOW COST								
USB-200-OEM Series	USB	8 SE	Up to 500 kS/s	12-bit	8	1	Up to 2	From \$105
USB-230-OEM Series	USB	8 SE/4 DIFF	Up to 100 kS/s	16-bit	8	1	2	From \$289
MCC 118	RPi	8 SE	100 kS/s	12-bit	—	—	—	\$99
MCC 128	RPi	8 SE/4 DIFF	100 kS/s	16-bit	—	—	—	\$199
MCC 134	RPi	4 Thermocouple	1 S/s	24-bit	—	—	—	\$149
MCC 152	RPi	—	—	12-bit	8	—	2	\$99
MCC 172	RPi	2 IEPE	51.2 kS/s/ch	24-bit	—	—	—	\$399
USB-1208FS-Plus-OEM	USB	8 SE/4 DIFF	50 kS/s	12-bit	16	1	2	\$199
E-1608-OEM	Ethernet	8 SE/4 DIFF	250 kS/s	16-bit	8	1	2	\$559
USB-1608G-OEM Series	USB	16 SE/8 DIFF	Up to 500 kS/s	16-bit	8	2	Up to 2	From \$459
SIMULTANEOUS								
USB-1808 Series	USB	8 SE/8 DIFF	Up to 200 kS/s/ch	18-bit	4	2*	2	From \$769
USB-1608FS-Plus-OEM	USB	8 SE	100 kS/s/ch	16-bit	8	1	—	\$459
DT9832/36-OEM Series	USB	2, 4, 6 or 12 SE	Up to 2 MS/s/ch	16-bit	32	5*	Up to 4	From \$1,969
DT9837-OEM Series	USB	4 SE with IEPE	Up to 105.4 kS/s/ch	24-bit	—	1	Up to 1	From \$1,839
HIGH SPEED								
USB-2600 Series	USB	16 or 64 SE	1 MS/s	16-bit	24	4	Up to 4	From \$919
USB-2020	USB	2 SE	20 MS/s/ch	12-bit	8	—	—	\$1,159
DIGITAL I/O								
USB-DIO24 Series	USB	—	—	—	24	1	—	From \$105
USB-DIO96H/50	USB	—	—	—	96	—	—	\$379
E-DIO24-OEM	Ethernet	—	—	—	24	1	—	\$279

* Capable of measuring quadrature encoders

Data Acquisition Software

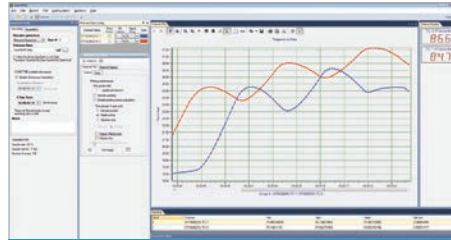
Software support includes easy-to-use data viewing and logging software, drivers for the most popular applications and languages, and support for various operating systems including Windows® and Linux®.

QUICK AND EASY



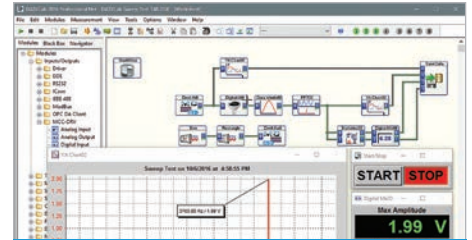
DAQami™

Companion software for acquiring data and generating signals with most MCC devices.



QuickDAQ

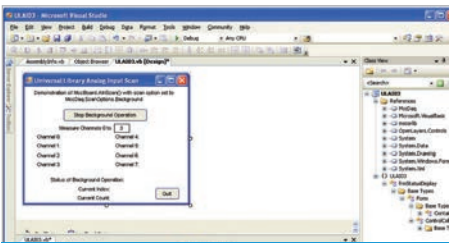
Acquire and display data from most Data Translation USB and Ethernet DAQ devices.



DASyLab™

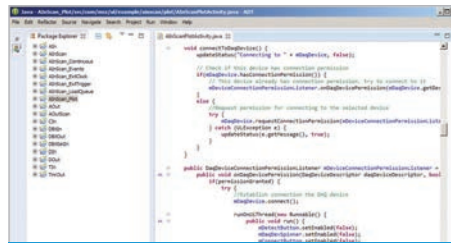
Real-time analysis, control, and custom GUI's without programming.

PROGRAMMING SUPPORT



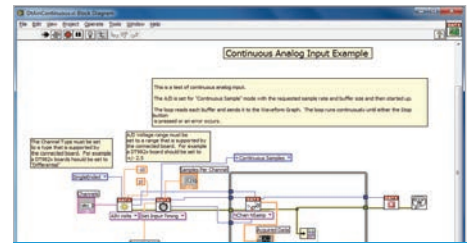
Windows®

Programming API for C®, C++®, C#®, .NET™, Visual Basic®, Visual Basic®.NET™, and Python™.



Linux®

UL for Linux is open-source, with interfaces for C/C++ and Python available on GitHub.



NI LabVIEW™ and MATLAB®

Comprehensive library of VIs and example programs.



FREE SUPPORT

Free technical support, for the life of your product, is available from qualified application engineers.



30-DAY MONEY-BACK GUARANTEE

If you aren't happy, simply return the product for a full refund (U.S. customers only).



1 YEAR WARRANTY

All products are backed with a one year warranty. Buy with confidence.



FREE SHIPPING

MCC offers free shipping on all orders placed on-line. Shipping charges apply to all other orders.

