

Features

- Large, backlit LCD display
- Front keypad w/lock feature
- User-selectable measurement units
- Simultaneous display of temperature and humidity
- N.I.S.T. traceable calibration
- Min./max. & average statistics
- Programmable start/stop time
- Convenient status indicators
- User replaceable battery and external power
- Wall mountable

Applications

- Remote data logging
- Warehouse monitoring
- HVAC
- Medical and Pharmaceutical
- Museum monitoring
- Environmental studies
- Implement HACCP programs
- Refrigeration

The RHTemp2000 is perfect for applications requiring instant remote readings of environmental parameters, including temperature and humidity.

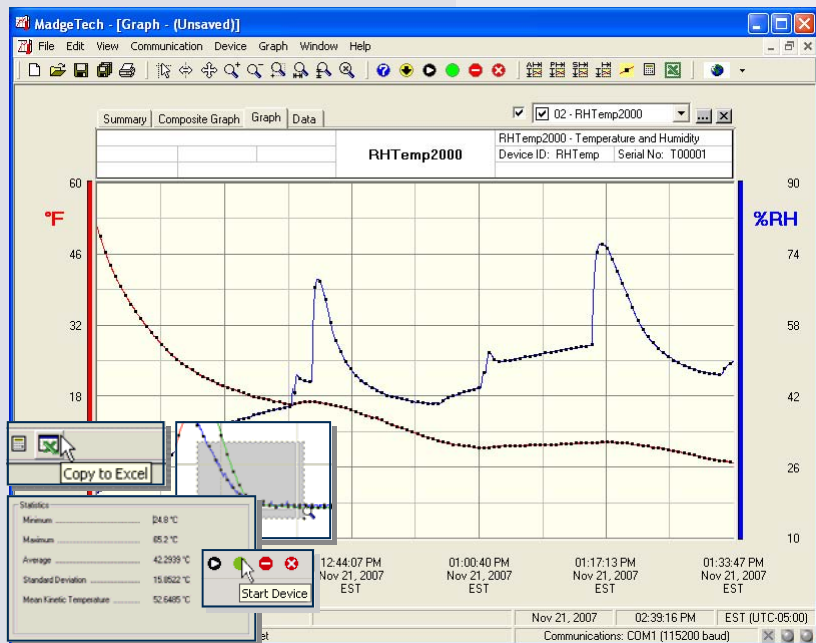
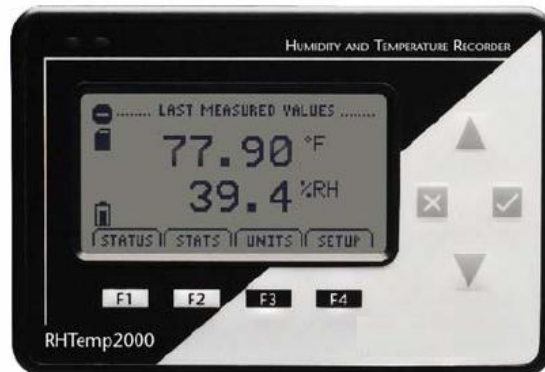
The 8-button keypad and large LCD provide convenient access to current data and recorder setup. Additionally, memory and battery levels, external power status, and sampling and recording status are shown on the LCD.

Available on-screen data includes: statistics (min, max, average) for the two channels; recording status (start, stop and recording rate); display options (channels shown, units, text size); and calibration information (date calibrated, date for recalibration). Statistics can be cleared at any time during logging.

With 131,071 readings per channel, the RHTemp2000 has one of the largest memory capacities of any similar data recorder on the market. The non-volatile memory will retain recorded data, even if AC and battery power are lost.

The RHTemp2000 runs on a 9V battery with a typical battery life of 1 year, at a 1 min reading rate with the display off. With continuous LCD and no backlight usage, the average battery life is 30 days. For power savings, both the LCD and backlight have configurable auto-off options. Those wanting to keep the LCD display and backlight continuously active need only to connect the unit to an AC power supply, keeping the 9V battery connected as a back-up.

N.I.S.T. traceable calibration is available for users needing to meet regulatory requirements. Creating permanent records, performing data calculations, and the graphing of data is quick and easy: Simply connect the interface cable to an available USB or serial port and, with a few clicks of the mouse, data is downloaded and ready for review or export to Excel®.



Data Recorder Software

displays humidity and temperature data in an easy to use graph.

The Windows®-based software package allows the user to effortlessly collect, display and analyze data. A variety of powerful tools allow you to examine, export, and print professional looking data with just a click of the mouse.

RHTEMP2000 SPECIFICATIONS*

TEMPERATURE

Range: -20 to +60°C

Resolution: 0.1°C

Calibrated Accuracy: ±0.5°C (0 to +50°C)

HUMIDITY

Range: 0 to 95%RH

Resolution: 0.1%RH

Calibrated Accuracy: ±3%RH (±2%RH typical at 25°C)

Specified Accuracy Range: +10 to +40°C, 10 to 80%RH

DOT-MATRIX LCD

Dimensions: 2.5" x 1.375" (63mm x 35mm)

Text: Configurable channel text size

Indicators: Power, status, memory

Backlight: Configurable w/auto shut-off and contrast adjustment

BATTERY WARNING: MAY LEAK AND/OR FLAME IF OPENED, RECHARGED, CONNECTED IMPROPERLY, OR DISPOSED OF IN FIRE.

SOFTWARE FEATURES

Multiple Graphs:	Simultaneously analyze data from several units or deployments; easily switch to a single data series	Statistics:	Calculate averages, min, max, standard deviation, and mean kinetic temperature with the touch of a button
Real-Time Recording:	Collect and display data in real-time while continuing to log	Export Data:	Export data in a variety of common formats, or switch to Excel® with a single click
Graphical Cursor:	One click displays readings by time, value, parameter or sample number	Calibration:	Automatically calculate and store calibration parameters
Data Table:	Instantly access tabular view for detailed dates, times, values, and annotations	Logger Configuration:	Easy set up and launch of data loggers with immediate or delayed start, preferred sample rate, and device ID
Scaling Options:	Autoscale function fits data to the screen, or allows user to manually enter their own values	Communications:	Automatically sets up communications port, or lets user select configuration
Formatting Options:	Change colors, line styles, plotting options, show or hide channels quickly	Printing:	Automatically print graphical or tabular data

*SPECIFICATIONS ARE SUBJECT TO CHANGE WITHOUT NOTICE. SPECIFIC WARRANTY AND REMEDY LIMITATIONS APPLY.

ORDERING INFORMATION

<u>Model</u>	<u>Description</u>
RHTEMP2000	Humidity and Temperature Recorder w/LCD Display
IFC110	Software, manual and RS232 interface cable
IFC200	Software, manual and USB interface cable
NIST	N.I.S.T. Calibration Certificate
U9VL-J	Replacement battery for RHTemp2000
DC9V-NA	9 Volt AC wall mounted Adapter (North American version)
DC9V-EU	9 Volt AC wall mounted Adapter (European version)

ASK ABOUT OUR OTHER DATA RECORDERS

Temperature	Pulse/Event/State
Humidity	Low Level Current
Pressure	Low Level Voltage
pH	RF Transmitters
Level	Intrinsically Safe
Shock	Spectral Vibration
LCD Display	



PLCs



Acquisition



Instruments



Data logger



Power



HMI's



Switches



Motion



Sensors



Converters



Keyboards



SCADA



Telemetry